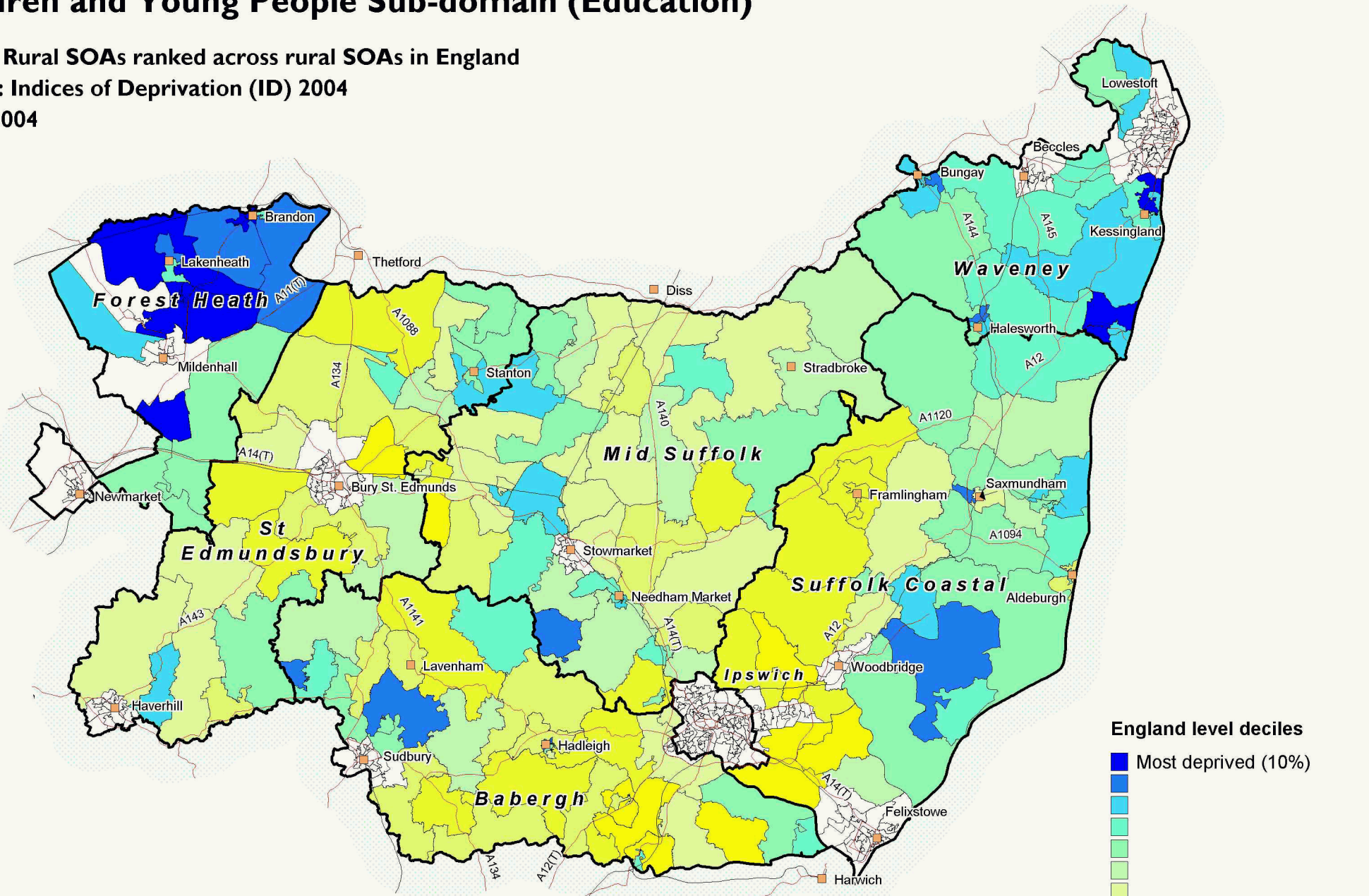


# Children and Young People Sub-domain (Education)

Suffolk Rural SOAs ranked across rural SOAs in England

Source: Indices of Deprivation (ID) 2004

Date: 2004



England level deciles

■ Most deprived (10%)

■

■

■

■

■

■

■

■ Least deprived (10%)

□ Missing / suppressed data

SOAs are Super Output Areas, a statistical geography developed for the Census

Source: Indices of Deprivation (ID) 2004: ODPM. Crown copyright.

Suffolk County Council Licence 100023395

Crown copyright material is reproduced with permission of the controller of HMSO.

The colours on this map show 'England level deciles', based on the ranking of areas across England

Produced by Oxford Consultants for Social Inclusion, [www.oci.co.uk](http://www.oci.co.uk), September 2007

