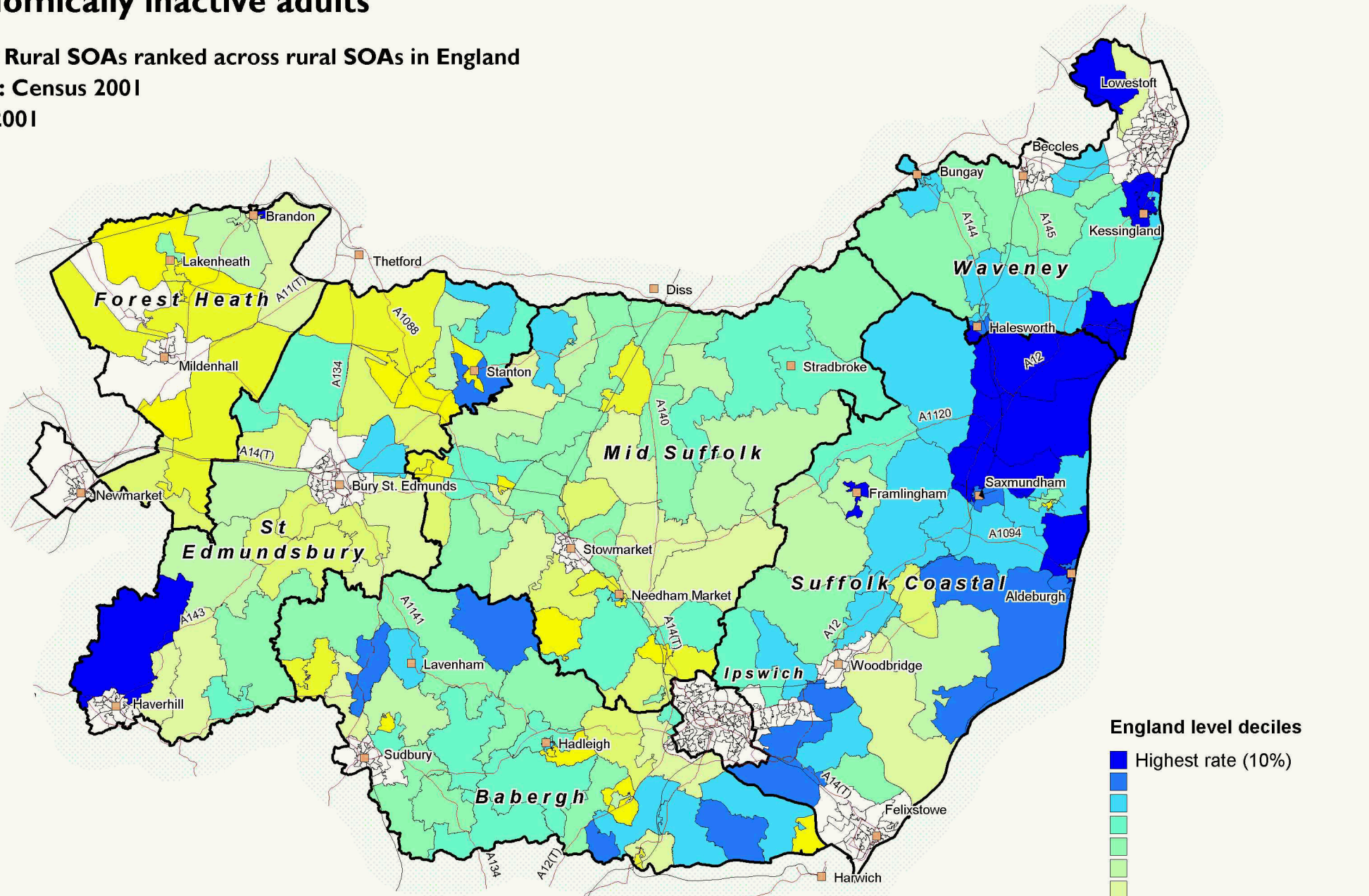


Economically inactive adults

Suffolk Rural SOAs ranked across rural SOAs in England

Source: Census 2001

Date: 2001



England level deciles

- Highest rate (10%)
-
-
-
-
-
-
-
- Lowest rate (10%)
- Missing / suppressed data

SOAs are Super Output Areas, a statistical geography developed for the Census

Source: Census 2001. Crown copyright.

Suffolk County Council Licence 100023395

Crown copyright material is reproduced with permission of the controller of HMSO.

The colours on this map show 'England level deciles', based on the ranking of areas across England

Produced by Oxford Consultants for Social Inclusion, www.oci.co.uk, September 2007

