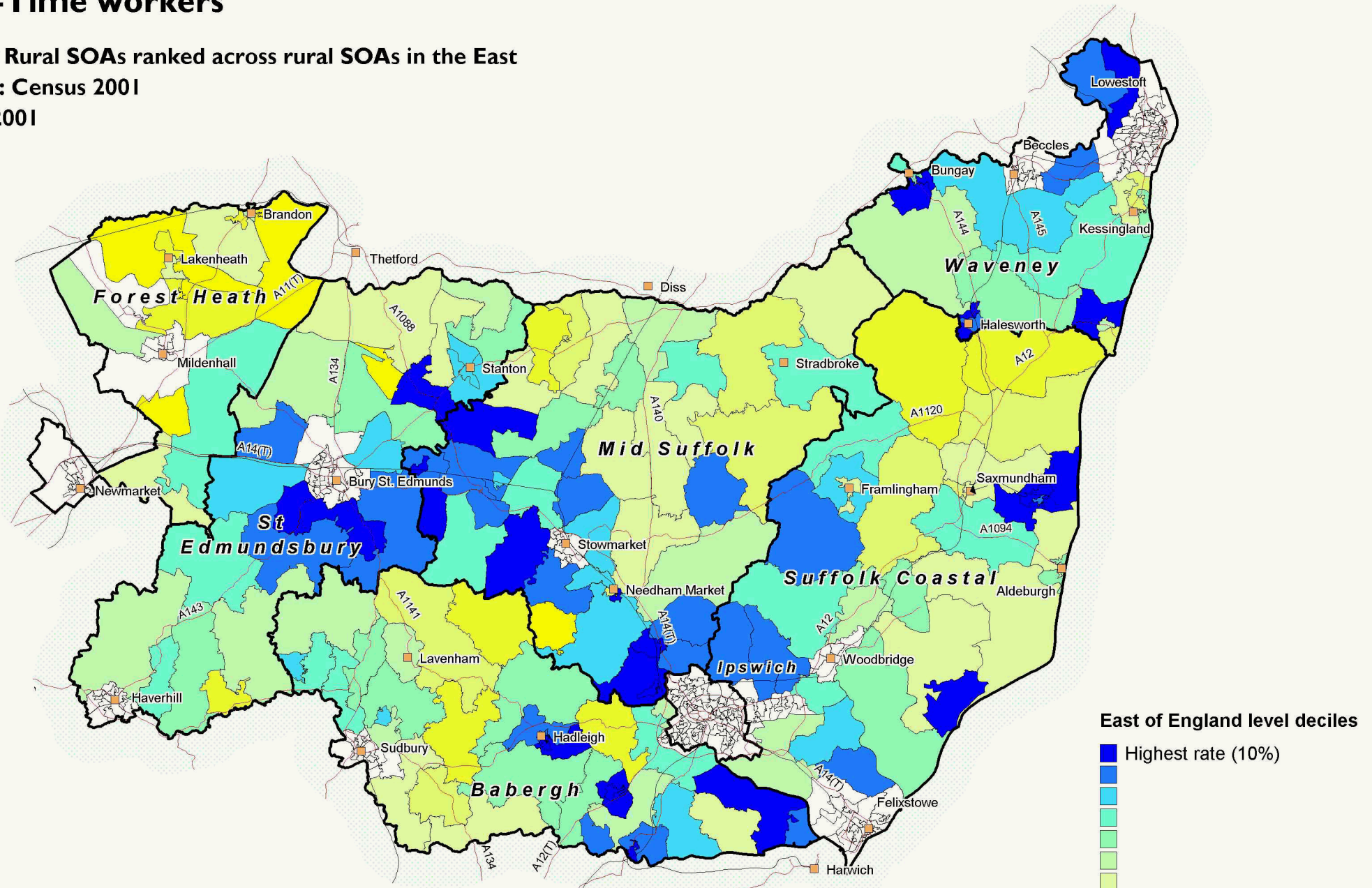


# Part-Time workers

Suffolk Rural SOAs ranked across rural SOAs in the East

Source: Census 2001

Date: 2001



East of England level deciles

- Highest rate (10%)
- 
- 
- 
- 
- 
- 
- Lowest rate (10%)
- Missing / suppressed data

SOAs are Super Output Areas, a statistical geography developed for the Census

Source: Census 2001. Crown copyright.

Suffolk County Council Licence 100023395

Crown copyright material is reproduced with permission of the controller of HMSO.

The colours on this map show 'Regional level deciles', based on the ranking of areas across the East

Produced by Oxford Consultants for Social Inclusion, [www.oci.co.uk](http://www.oci.co.uk), September 2007

