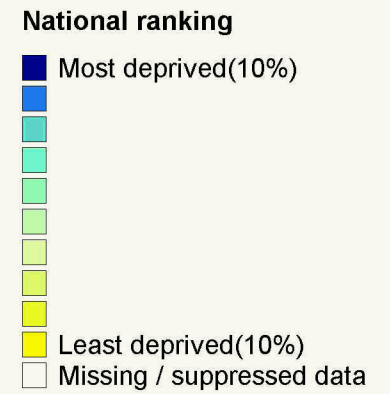
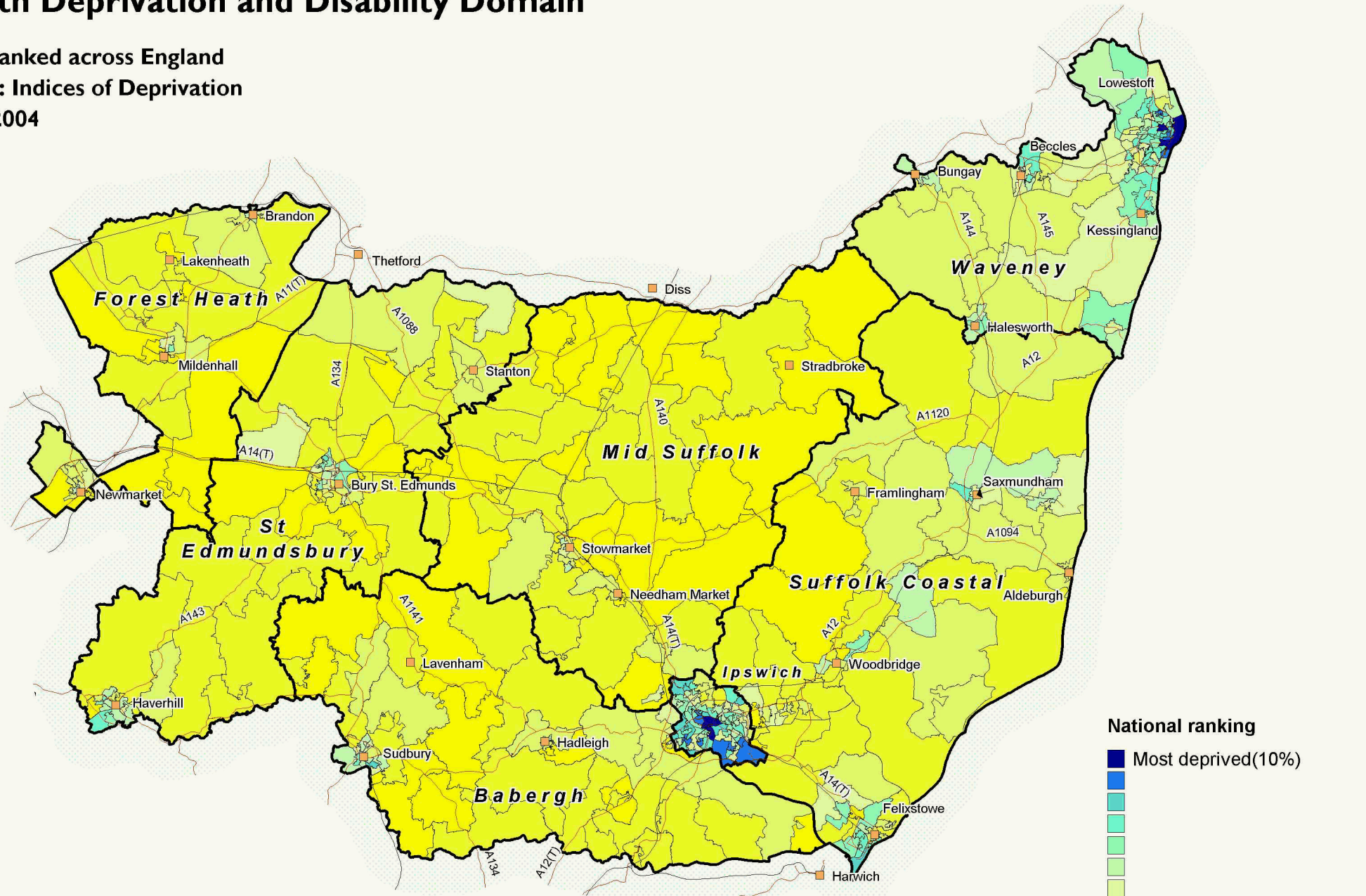


Health Deprivation and Disability Domain

SOA ranked across England

Source: Indices of Deprivation

Date: 2004



SOA are Output Areas, a statistical geography developed for the Census
 Source: Office of deputy Prime Minister. Crown copyright.
 Suffolk County Council Licence 100023395
 Crown copyright material is reproduced with permission of the controller of HMSO.
 The colours on this map show Suffolk deciles based on the ranking of areas across England
 Produced by Oxford Consultants for Social Inclusion, www.oci.co.uk , November 2007

